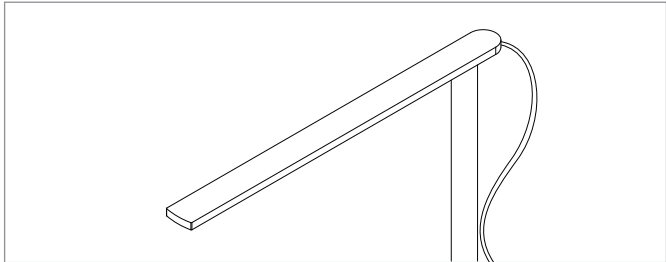


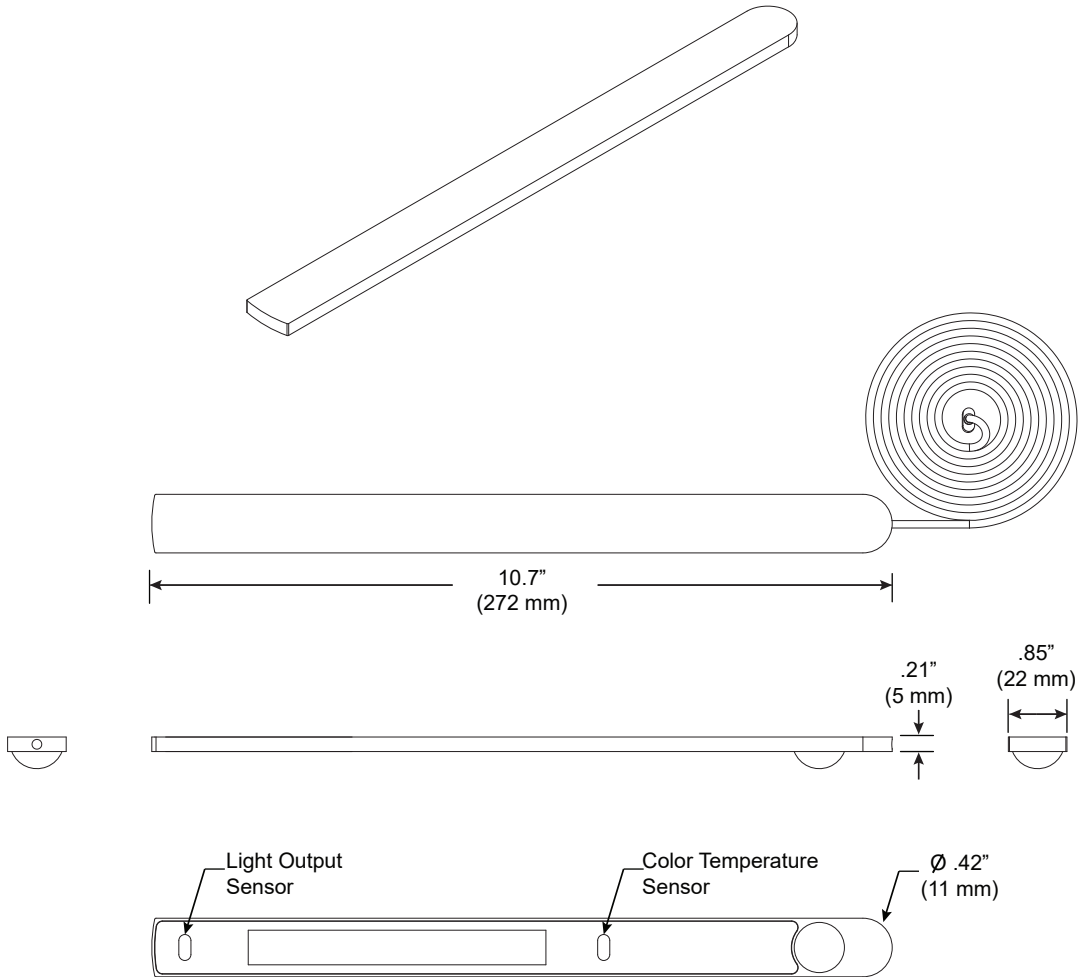
Light Bar

For use with System | 507

System | 507 Light Bar supported by 7 mounting options. Proximity sensors allow easy cycling of color temperature and light output.



Technical Support: 707-996-9898



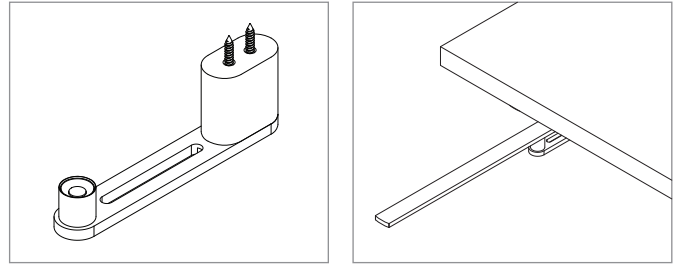
PART NUMBER 507-ULO-11-Z-CCT-90-YY

DESCRIPTION System LED 507, ulo, 10.70" (272mm), zipper board, "CCT" [COLOR TEMPERATURE], 90 CRI, "YY" [FINISH], available in anodized aluminum (AL), white painted (WH), and black anodized (AB).

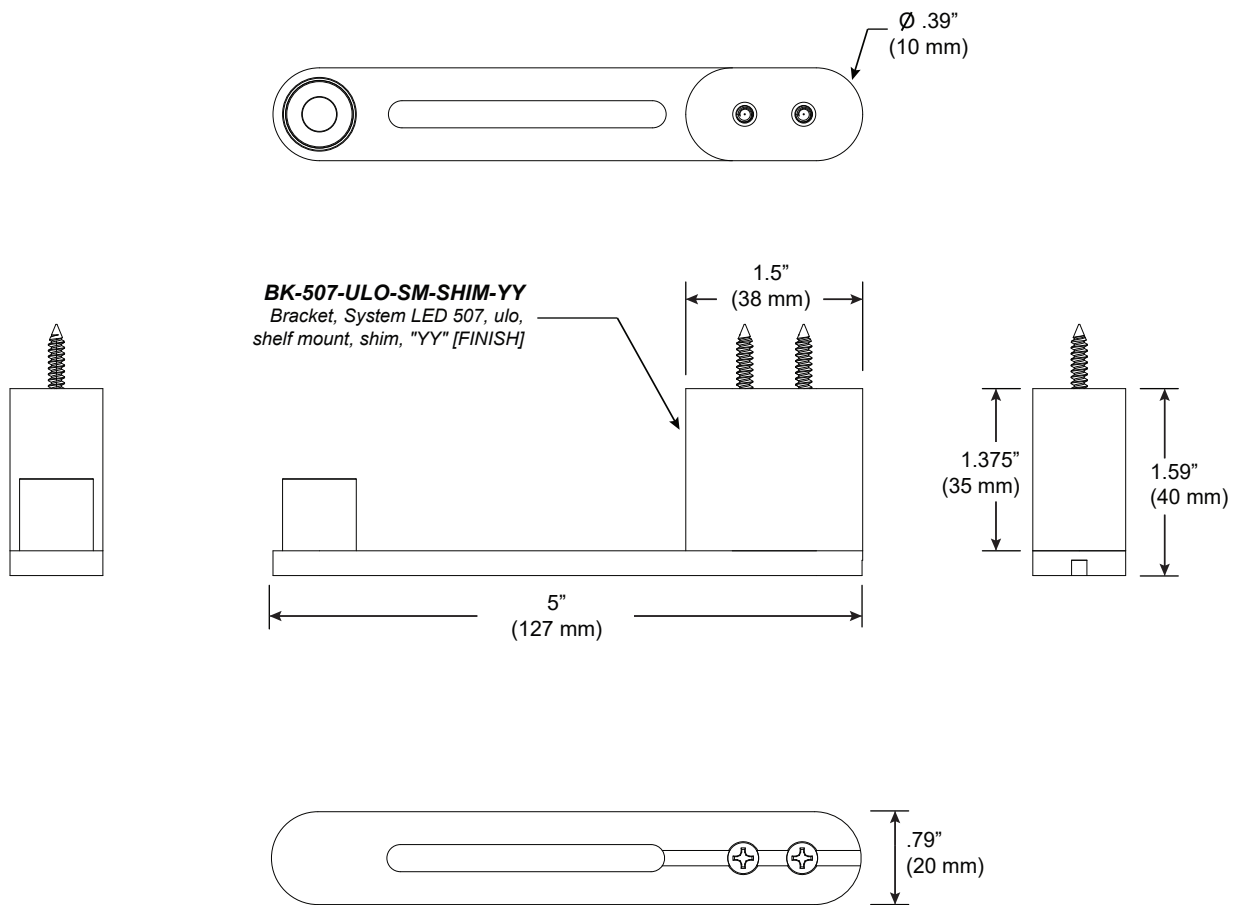
Shelf Mount

For use with System | 507

Mounts System | 507 Light Bar to most flat surfaces. Shelf Mount can be installed into most surfaces for permanent mounting. Can be mounted with or without shim (BK-507-ULO-SM-SHIM-YY). Cord hangs free.



Technical Support: 707-996-9898



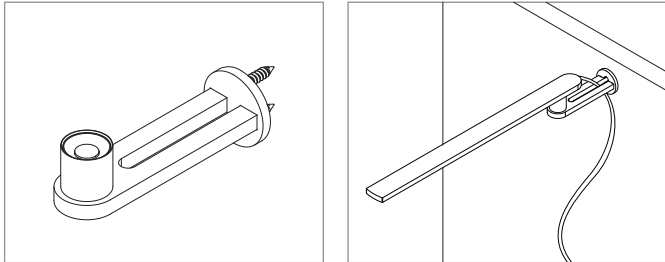
PART NUMBER **507-ULO-SM-YY**

DESCRIPTION System LED 507, ulo, shelf mount, "YY" [FINISH], available in anodized aluminum (AL), white painted (WH) and black anodized (AB).

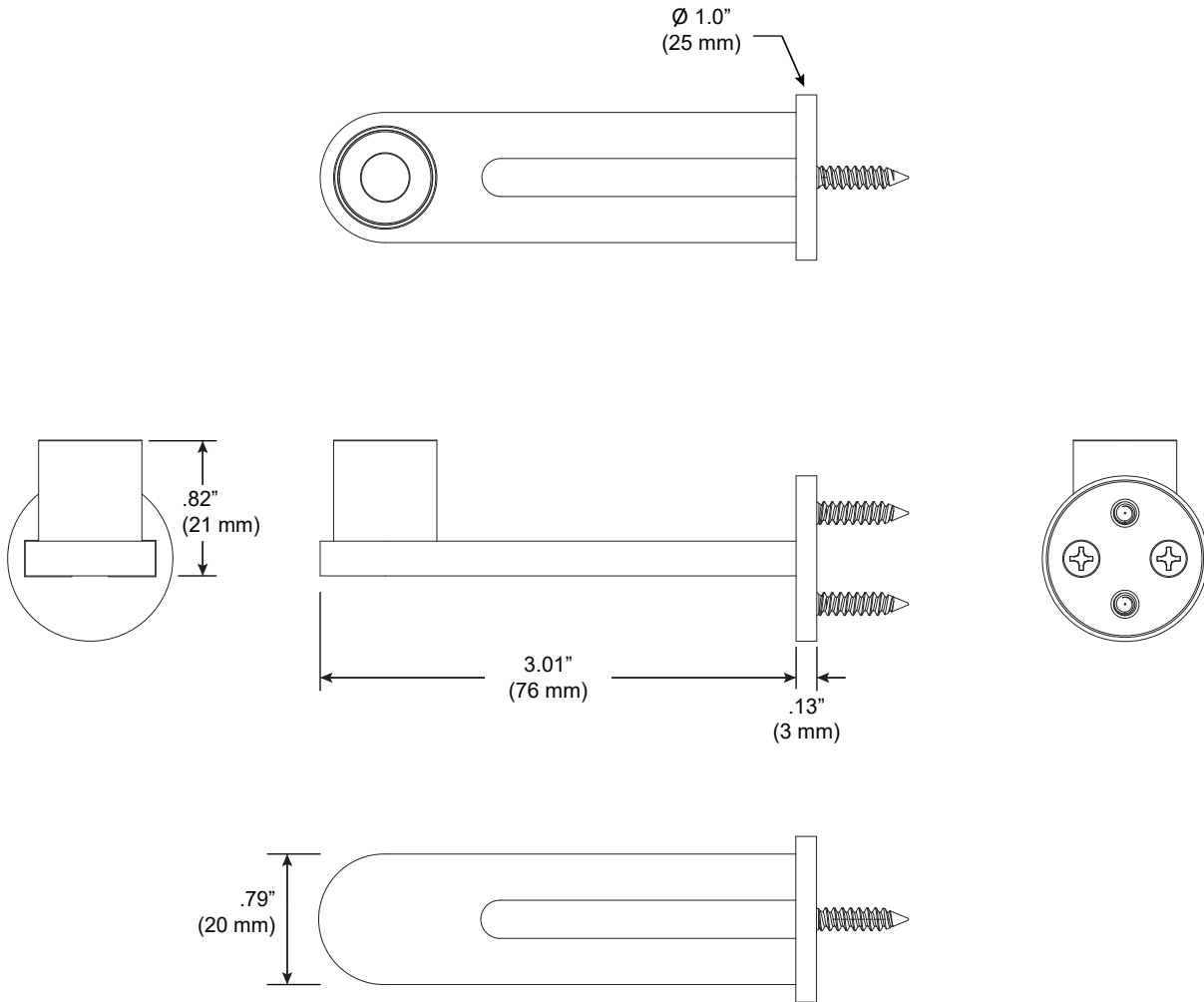
Wall Surface Mount

For use with System | 507

Mounts System | 507 Light Bar to most flat surfaces. Wall Surface mount can be installed into most surfaces for permanent mounting. Cord hangs free.



Technical Support: 707-996-9898



PART NUMBER **507-ULO-WS-YY**

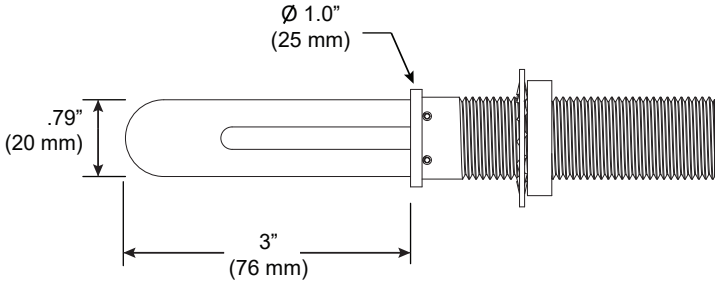
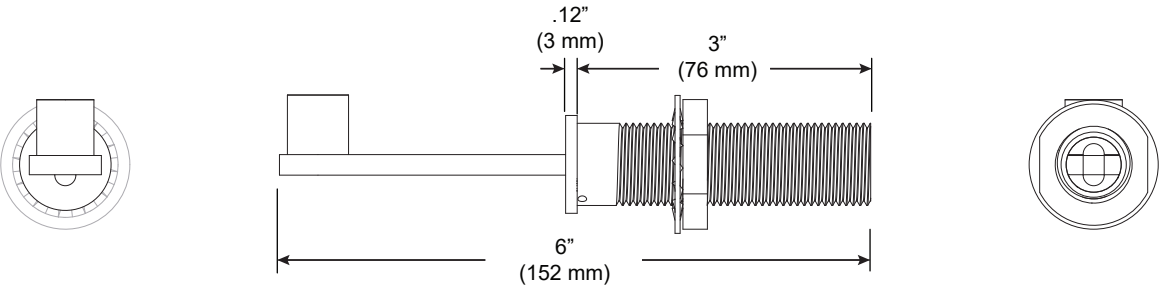
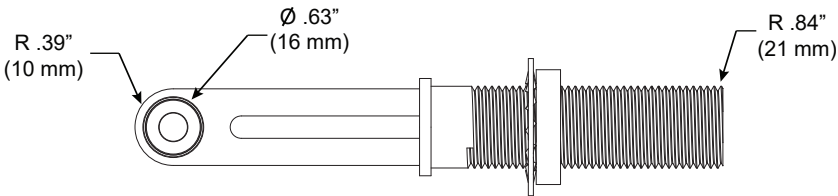
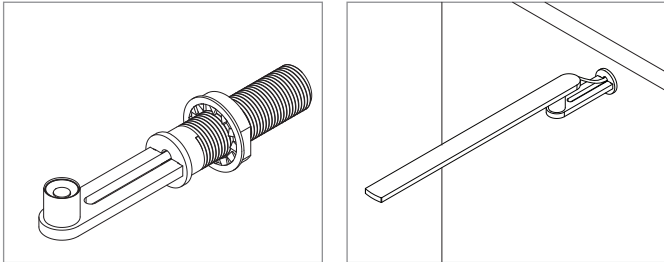
DESCRIPTION System LED 507, ulo, wall surface, "YY" [FINISH], available in anodized aluminum (AL), white painted (WH) and black anodized (AB).

Wall Anchor

For use with System | 507

Mounts System | 507 Light Bar and arm to wall surface. Mounts to work surface from 1/2" - 2 1/4" (13 - 57 mm) thick. Fits hole size 7/8" (22 mm). 8" (203 mm) is required behind mounting surface for proper installation. Cord is routed through wall anchor.

Technical Support: 707-996-9898



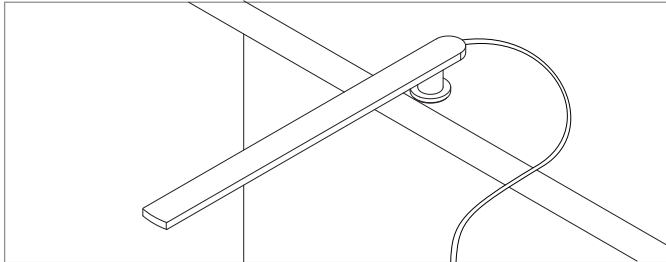
PART NUMBER **507-ULO-WR-YY**

DESCRIPTION System LED 507, ulo, wall anchor, "YY" [FINISH], available in anodized aluminum (AL), white painted (WH) and black anodized (AB).

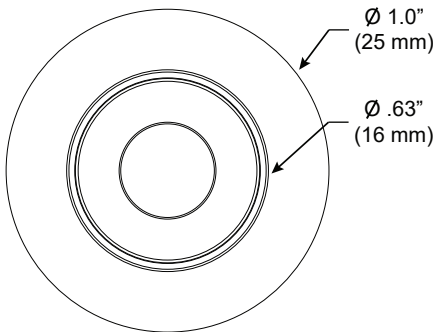
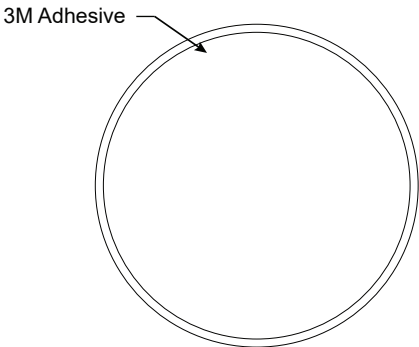
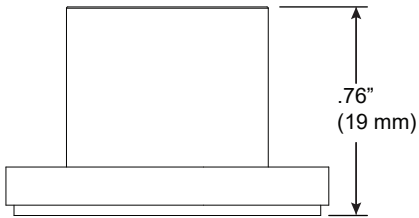
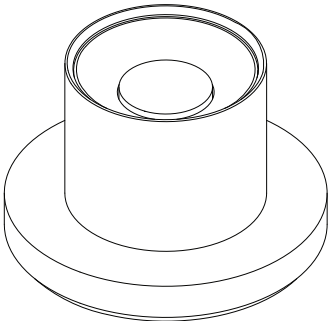
Mini Mount

For use with System | 507

Mounts System | 507 Light Bar to flat surfaces. Mini Mount can be adhered to most surfaces for permanent mounting. Cord hangs free.



Technical Support: 707-996-9898



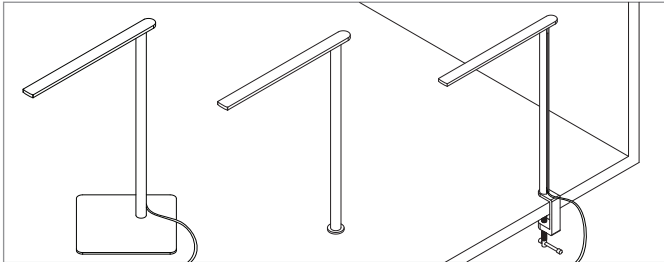
PART NUMBER 507-ULO-MM-YY

DESCRIPTION System LED 507, ulo, mini-mount, "YY" [FINISH], available in anodized aluminum (AL), white painted (WH) and black anodized (AB).

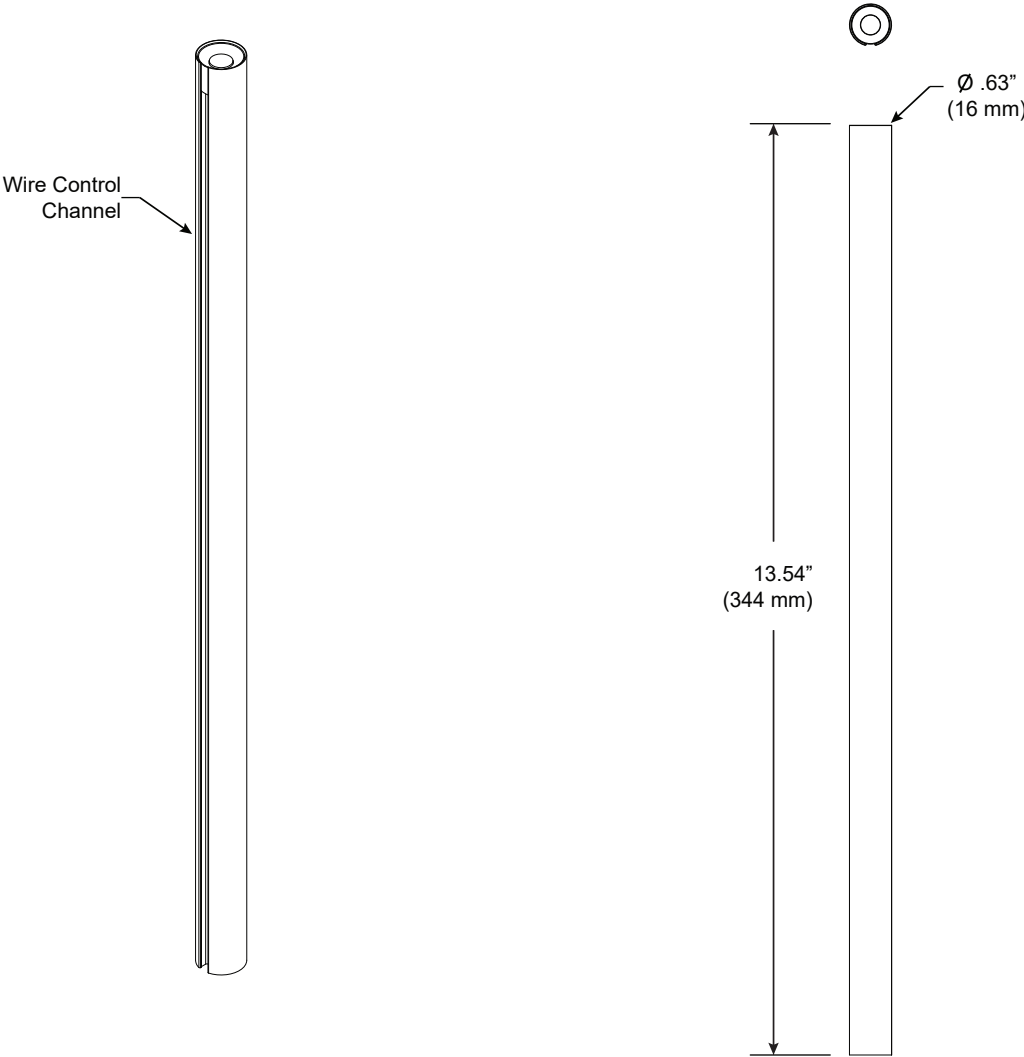
ulo Arm

For use with System | 507

Mounts System | 507 Light Bar to the Portable Deak Mount Base, Table Anchor and Table Clamp mounting systems.



Technical Support: 707-996-9898



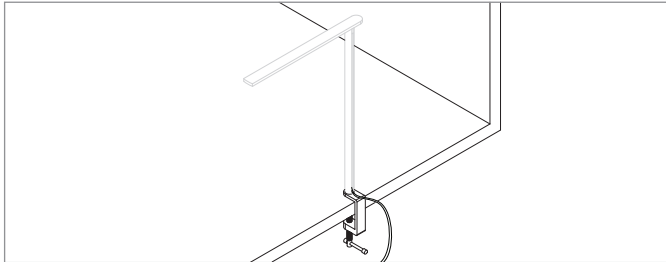
PART NUMBER AM-507-ULO-S14-TA-YY

DESCRIPTION Arm, System LED 507, ulo, 13.54" (344mm), table arm, "YY" [FINISH], available in anodized aluminum (AA), white painted (W1) and black anodized (AB).

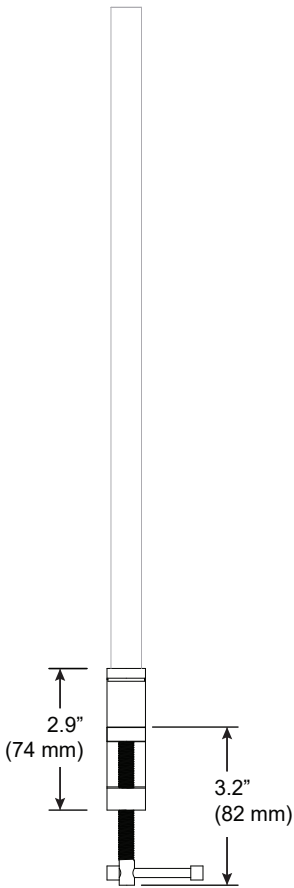
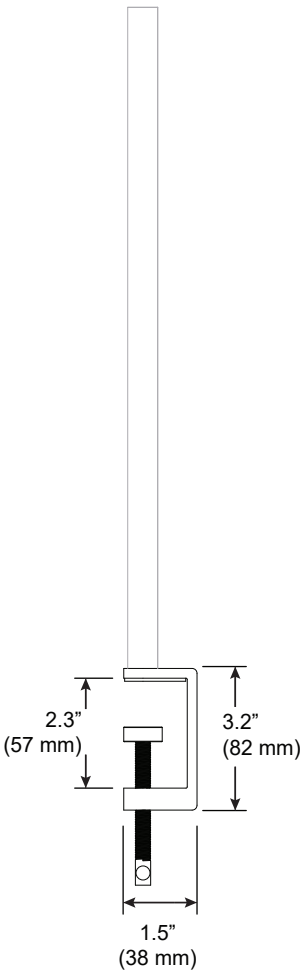
Table Clamp Mount

For use with System | 507

Mounts System | 507 Light Bar to most table surfaces.
 Mounts to work surface from 1/8" to 2" (3 mm to 50 mm) thick.
 Arm is supplied with wire management channel.



Technical Support: 707-996-9898



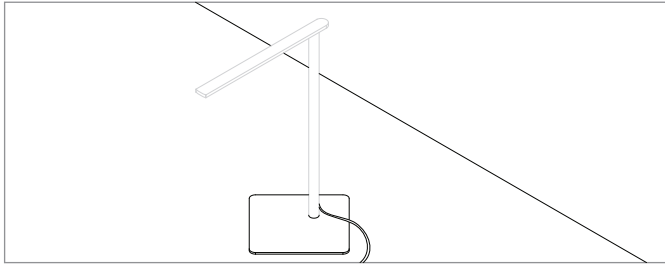
PART NUMBER 507-ULO-TC-YY

DESCRIPTION System LED 507, ulo, table clamp, 2" (50mm) opening, "YY" [FINISH], available in anodized aluminum (AL), white painted (WH) and black anodized (AB).

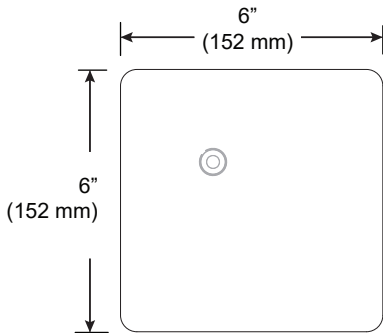
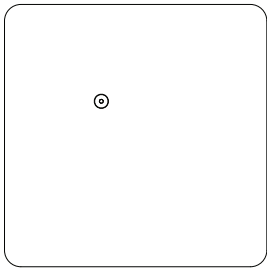
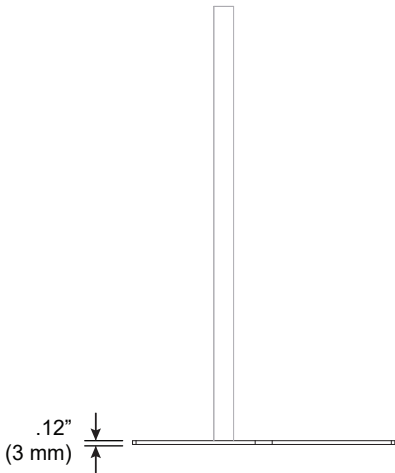
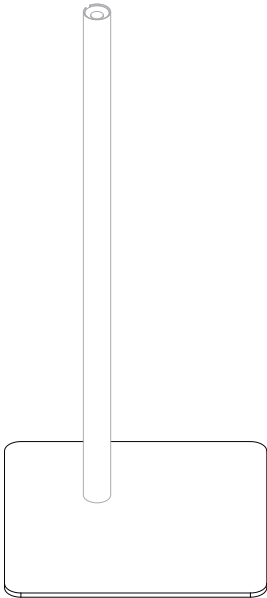
Portable Desk Mount Base

For use with System | 507

Mounts System | 507 Light Bar and arm for mobile surface mounting. EVA pad on base protects surface. Arm is supplied with wire management channel.



Technical Support: 707-996-9898



PART NUMBER 507-ULO-BASE-PD-YY

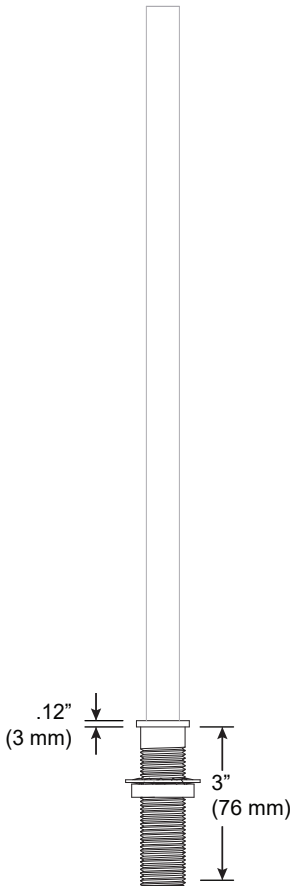
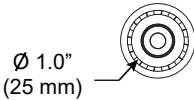
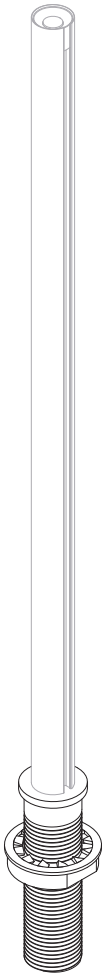
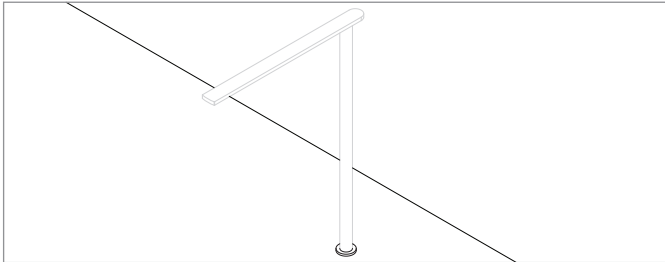
DESCRIPTION System LED 507, ulo, base, portable desk, 6" (152mm) x 6" (152mm), "YY" [FINISH], available in anodized aluminum (AL), white painted (WH) and black anodized (AB).

Table Anchor

For use with System | 507

Mounts System | 507 Light Bar and arm to table surface. Mounts to surface from 1/2" - 2 1/4" (13 - 57 mm) thick. Fits hole size 7/8" (22 mm). 8" (203 mm) is required behind mounting surface for proper installation. Arm is supplied with wire management channel. Cord is routed through anchor.

Technical Support: 707-996-9898



PART NUMBER 507-ULO-TR-YY

DESCRIPTION System LED 507, ulo, table anchor, "YY" [FINISH], available in anodized aluminum (AL), white painted (WH) and black anodized (AB).