

IES Report

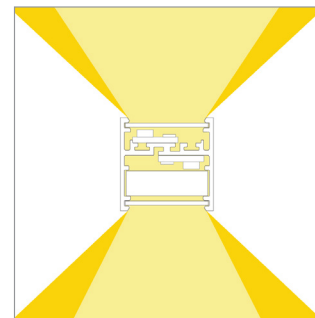
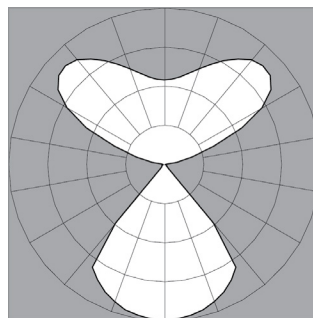
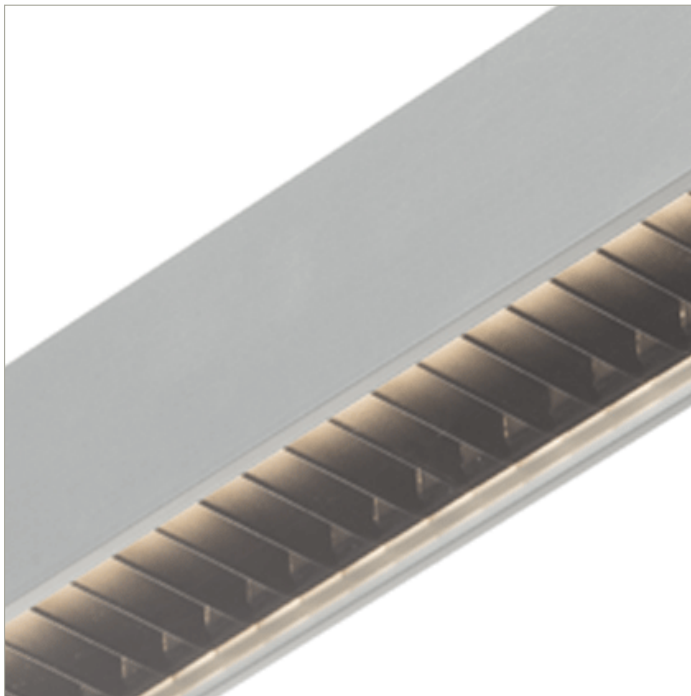
BoxRail® | 207 | Wide Batwing, up | Black Baffle, down | 80 CRI | LO

207-BX-XX-4-48-XX-XX-XX-XX-X-X-Z-LO-35-G1BB-X-AL / WH-X

	2700K	3000K	3500K	4000K
Efficacy - Lumens per Watt	70	72	73	73
Total Lumens, 4' rail length (1219mm)	1989	2052	2093	2093
Lumens per foot (305mm)	497	513	523	523
Lumens per foot UP (305mm)	373	384	392	392
Lumens per foot DOWN (305mm)	125	129	131	131
Input Power (W), 4' rail length (1219mm)	28.8	28.8	28.8	28.8
Watts per foot (305mm)	7.2	7.2	7.2	7.2
CRI	82	82	82	82

Due to the large number of options in Vode's product offering, most Vode IES reports are factored reports prepared from source reports. Source reports are the IES test reports prepared for Vode by an NVLAP accredited photometric test laboratory. Factored reports are based on data from the Vode source reports.

If the data above is in black, it is directly from a Vode source report. If it is in grey, it is factored from Vode source reports. Reference details on Vode source reports can be found on the [IES File Finder](#) page on [vode.com](#).



IES Report

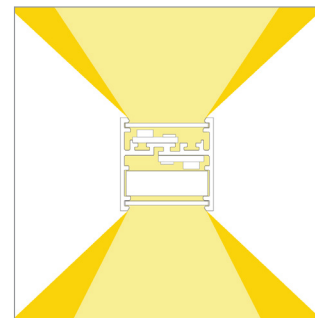
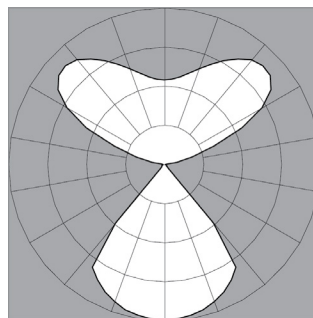
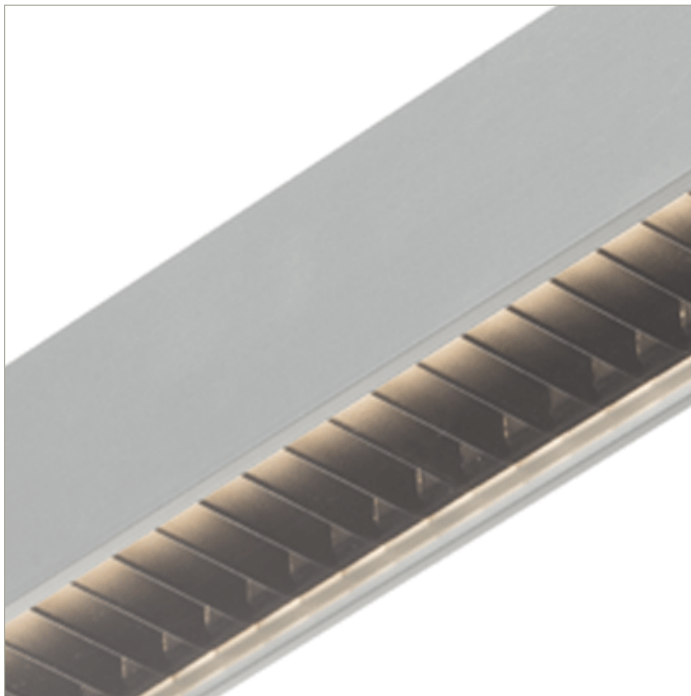
BoxRail® | 207 | Wide Batwing, up | Black Baffle, down | 80 CRI | SO

207-BX-XX-4-48-XX-XX-XX-XX-X-X-Z-SO-35-G1BB-X-AL / WH-X

	2700K	3000K	3500K	4000K
Efficacy - Lumens per Watt	79	82	83	83
Total Lumens, 4' rail length (1219mm)	3977	4103	4187	4187
Lumens per foot (305mm)	994	1026	1047	1047
Lumens per foot UP (305mm)	745	769	784	784
Lumens per foot DOWN (305mm)	249	257	262	262
Input Power (W), 4' rail length (1219mm)	50.5	50.5	50.5	50.5
Watts per foot (305mm)	12.7	12.7	12.7	12.7
CRI	82	82	82	82

Due to the large number of options in Vode's product offering, most Vode IES reports are factored reports prepared from source reports. Source reports are the IES test reports prepared for Vode by an NVLAP accredited photometric test laboratory. Factored reports are based on data from the Vode source reports.

If the data above is in black, it is directly from a Vode source report. If it is in grey, it is factored from Vode source reports. Reference details on Vode source reports can be found on the [IES File Finder](#) page on [vode.com](#).



IES Report

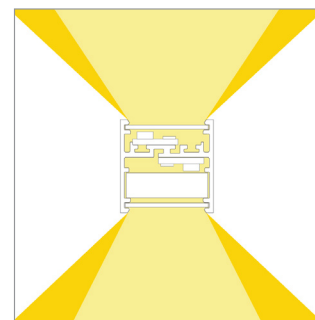
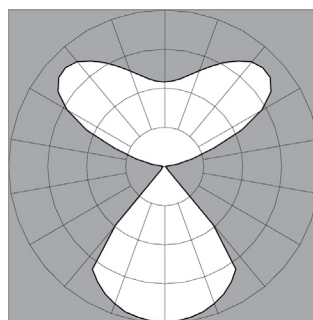
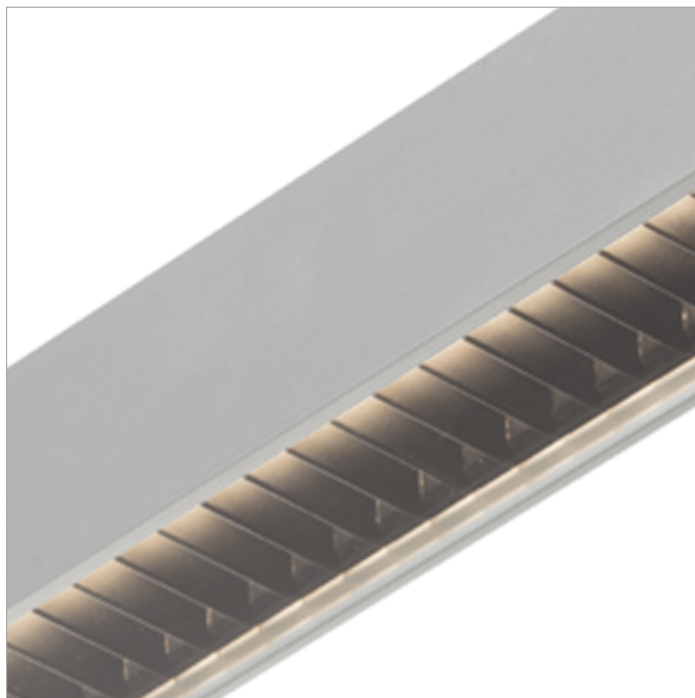
BoxRail® | 207 | Wide Batwing, up | Black Baffle, down | 80 CRI | HO

207-BX-XX-4-48-XX-XX-XX-XX-X-X-Z-HO-35-G1BB-X-AL / WH-X

	2700K	3000K	3500K	4000K
Efficacy - Lumens per Watt	74	76	78	78
Total Lumens, 4' rail length (1219mm)	7557	7796	7955	7955
Lumens per foot (305mm)	1889	1949	1989	1989
Lumens per foot UP (305mm)	1416	1460	1490	1490
Lumens per foot DOWN (305mm)	474	488	498	498
Input Power (W), 4' rail length (1219mm)	103.1	103.1	103.1	103.1
Watts per foot (305mm)	25.8	25.8	25.8	25.8
CRI	82	82	82	82

Due to the large number of options in Vode's product offering, most Vode IES reports are factored reports prepared from source reports. Source reports are the IES test reports prepared for Vode by an NVLAP accredited photometric test laboratory. Factored reports are based on data from the Vode source reports.

If the data above is in black, it is directly from a Vode source report. If it is in grey, it is factored from Vode source reports. Reference details on Vode source reports can be found on the [IES File Finder](#) page on [vode.com](#).



IES Report

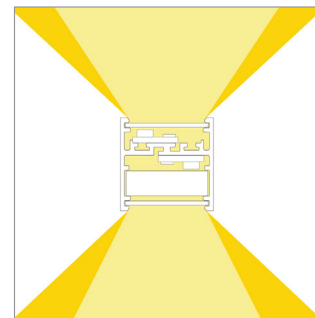
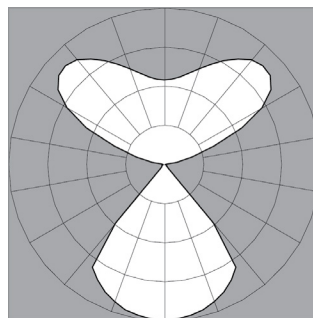
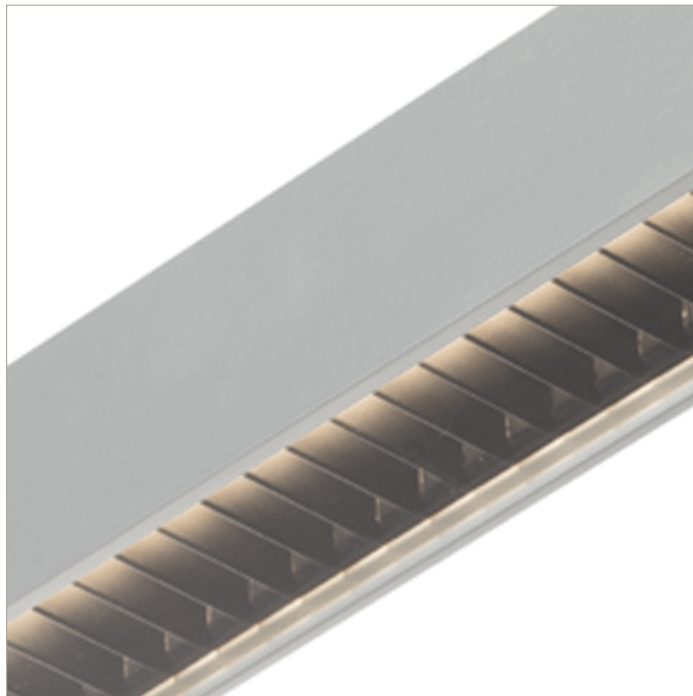
BoxRail[®] | 207 | Wide Batwing, up | Black Baffle, down | 90 CRI | LO

207-BX-XX-4-48-XX-XX-XX-XX-X-X-Z-LO-359-G1BB-X-AL / WH-X

	2700K	3000K	3500K	4000K
Efficacy - Lumens per Watt	60	62	63	64
Total Lumens, 4' rail length (1219mm)	1714	1769	1805	1823
Lumens per foot (305mm)	429	442	451	456
Lumens per foot UP (305mm)	321	331	338	341
Lumens per foot DOWN (305mm)	107	111	113	114
Input Power (W), 4' rail length (1219mm)	28.8	28.8	28.8	28.8
Watts per foot (305mm)	7.2	7.2	7.2	7.2
CRI	94	94	94	94

Due to the large number of options in Vode's product offering, most Vode IES reports are factored reports prepared from source reports. Source reports are the IES test reports prepared for Vode by an NVLAP accredited photometric test laboratory. Factored reports are based on data from the Vode source reports.

If the data above is in black, it is directly from a Vode source report. If it is in grey, it is factored from Vode source reports. Reference details on Vode source reports can be found on the [IES File Finder](#) page on [vode.com](#).



IES Report

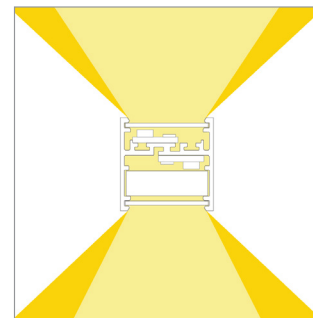
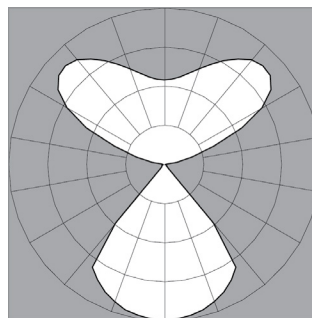
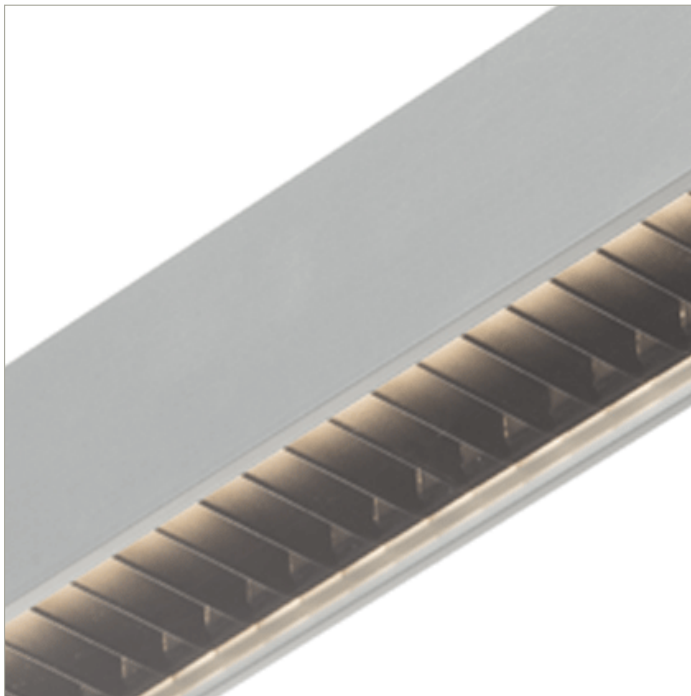
BoxRail[®] | 207 | Wide Batwing, up | Black Baffle, down | 90 CRI | SO

207-BX-XX-4-48-XX-XX-XX-XX-X-X-Z-SO-359-G1BB-X-AL / WH-X

	2700K	3000K	3500K	4000K
Efficacy - Lumens per Watt	68	71	72	73
Total Lumens, 4' rail length (1219mm)	3429	3537	3609	3645
Lumens per foot (305mm)	857	884	902	911
Lumens per foot UP (305mm)	642	663	676	683
Lumens per foot DOWN (305mm)	215	222	226	228
Input Power (W), 4' rail length (1219mm)	50.5	50.5	50.2	50.5
Watts per foot (305mm)	12.7	12.7	12.6	12.7
CRI	94	94	94	94

Due to the large number of options in Vode's product offering, most Vode IES reports are factored reports prepared from source reports. Source reports are the IES test reports prepared for Vode by an NVLAP accredited photometric test laboratory. Factored reports are based on data from the Vode source reports.

If the data above is in black, it is directly from a Vode source report. If it is in grey, it is factored from Vode source reports. Reference details on Vode source reports can be found on the [IES File Finder](#) page on [vode.com](#).



IES Report

BoxRail® | 207 | Wide Batwing, up | Black Baffle, down | 90 CRI | HO

207-BX-XX-4-48-XX-XX-XX-XX-X-X-Z-HO-359-G1BB-X-AL / WH-X

	2700K	3000K	3500K	4000K
Efficacy - Lumens per Watt	64	66	67	68
Total Lumens, 4' rail length (1219mm)	6515	6720	6858	6926
Lumens per foot (305mm)	1629	1680	1714	1732
Lumens per foot UP (305mm)	1221	1259	1285	1298
Lumens per foot DOWN (305mm)	408	421	430	434
Input Power (W), 4' rail length (1219mm)	103.1	103.1	103.1	103.1
Watts per foot (305mm)	25.8	25.8	25.8	25.8
CRI	94	94	94	94

Due to the large number of options in Vode's product offering, most Vode IES reports are factored reports prepared from source reports. Source reports are the IES test reports prepared for Vode by an NVLAP accredited photometric test laboratory. Factored reports are based on data from the Vode source reports.

If the data above is in black, it is directly from a Vode source report. If it is in grey, it is factored from Vode source reports. Reference details on Vode source reports can be found on the [IES File Finder](#) page on [vode.com](#).