

## IES Report

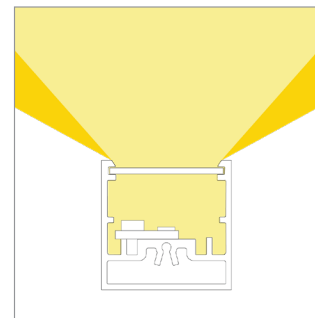
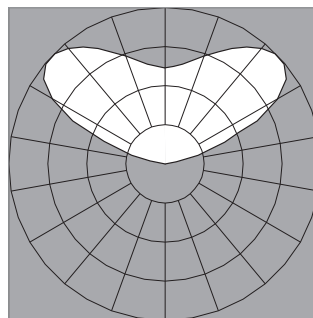
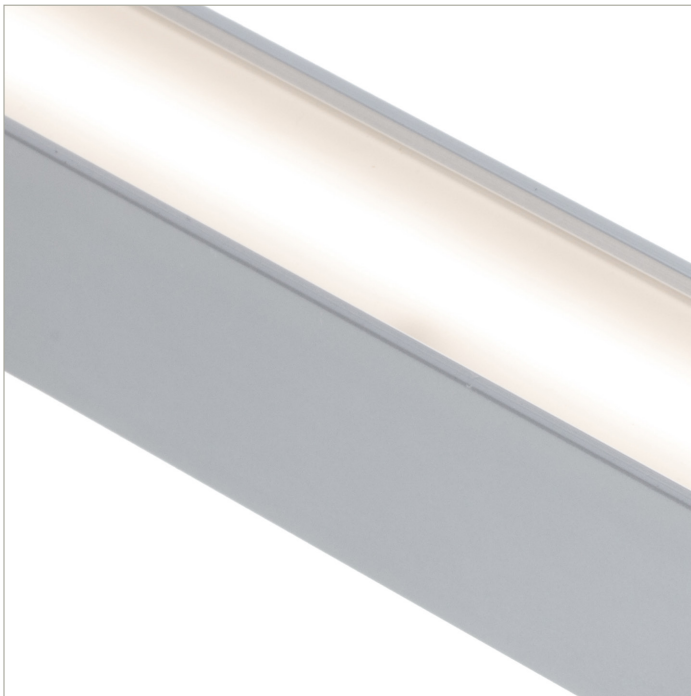
# BoxRail® | 107 | Wide Batwing | 80 CRI | LO

107-BX-XX-4-48-XX-XX-XX-XX-X-X-Z-LO-35-G1-X-XX-X

	2700K	3000K	3500K	4000K
Efficacy - Lumens per Watt	108	111	114	114
Total Lumens, 4' rail length (1219mm)	1485	1532	1564	1564
Lumens per foot (305mm)	371	383	391	391
Input Power (W), 4' rail length (1219mm)	13.8	13.8	13.8	13.8
Watts per foot (305mm)	3.5	3.5	3.5	3.5
CRI	82	82	82	82

Due to the large number of options in Vode's product offering, most Vode IES reports are factored reports prepared from source reports. Source reports are the IES test reports prepared for Vode by an NVLAP accredited photometric test laboratory. Factored reports are based on data from the Vode source reports.

If the data above is in black, it is directly from a Vode source report. If it is in grey, it is factored from Vode source reports. Reference details on Vode source reports can be found on the [IES File Finder](#) page on [vode.com](#).



## IES Report

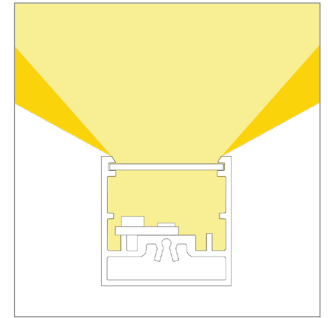
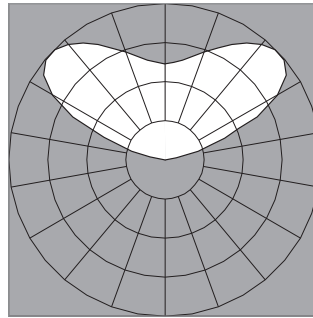
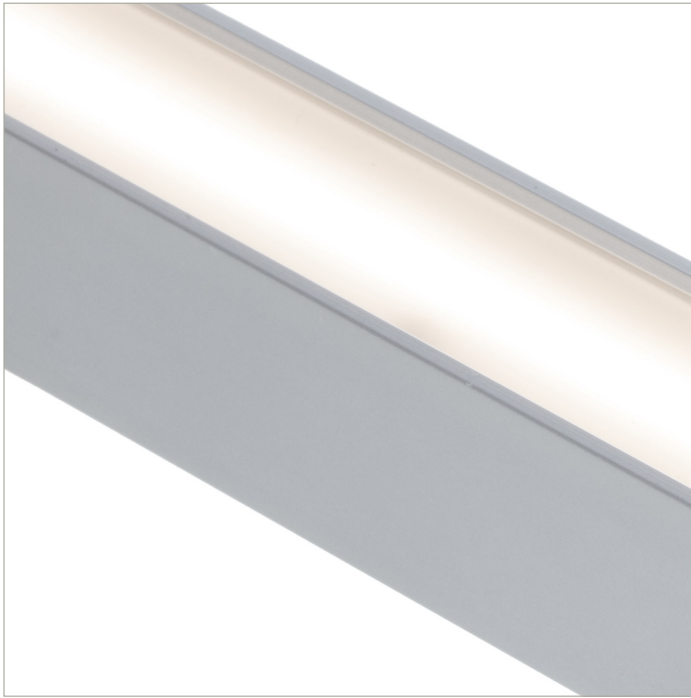
# BoxRail® | 107 | Wide Batwing | 80 CRI | SO

107-BX-XX-4-48-XX-XX-XX-XX-X-X-Z-SO-35-G1-X-XX-X

	2700K	3000K	3500K	4000K
Efficacy - Lumens per Watt	125	128	131	131
Total Lumens, 4' rail length (1219mm)	2971	3065	3127	3127
Lumens per foot (305mm)	743	766	782	782
Input Power (W), 4' rail length (1219mm)	24.0	24.0	24.0	24.0
Watts per foot (305mm)	6.0	6.0	6.0	6.0
CRI	82	82	82	82

Due to the large number of options in Vode's product offering, most Vode IES reports are factored reports prepared from source reports. Source reports are the IES test reports prepared for Vode by an NVLAP accredited photometric test laboratory. Factored reports are based on data from the Vode source reports.

If the data above is in black, it is directly from a Vode source report. If it is in grey, it is factored from Vode source reports. Reference details on Vode source reports can be found on the [IES File Finder](#) page on [vode.com](#).



## IES Report

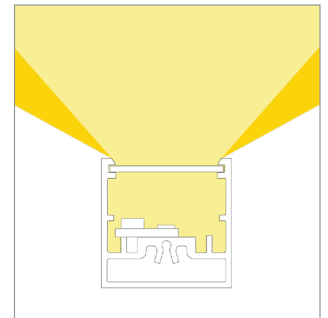
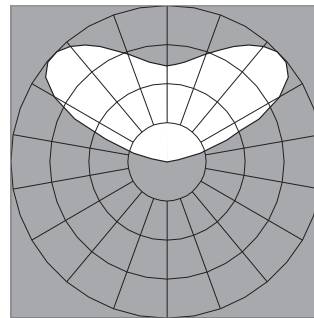
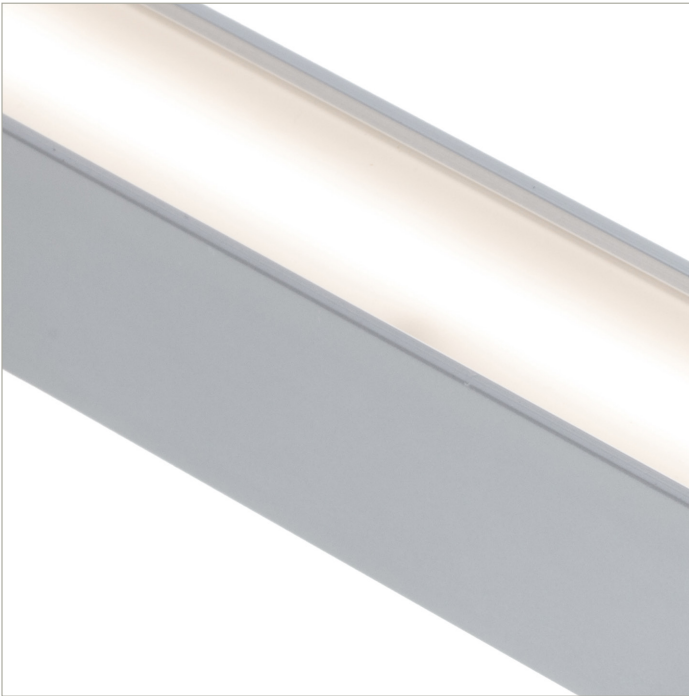
# BoxRail® | 107 | Wide Batwing | 80 CRI | HO

107-BX-XX-4-48-XX-XX-XX-XX-X-X-Z-HO-35-G1-X-XX-X

	2700K	3000K	3500K	4000K
Efficacy - Lumens per Watt	116	119	122	122
Total Lumens, 4' rail length (1219mm)	5645	5823	5942	5942
Lumens per foot (305mm)	1411	1456	1485	1485
Input Power (W), 4' rail length (1219mm)	49.1	49.1	49.1	49.1
Watts per foot (305mm)	12.3	12.3	12.3	12.3
CRI	82	82	82	82

Due to the large number of options in Vode's product offering, most Vode IES reports are factored reports prepared from source reports. Source reports are the IES test reports prepared for Vode by an NVLAP accredited photometric test laboratory. Factored reports are based on data from the Vode source reports.

If the data above is in black, it is directly from a Vode source report. If it is in grey, it is factored from Vode source reports. Reference details on Vode source reports can be found on the [IES File Finder](#) page on [vode.com](#).



## IES Report

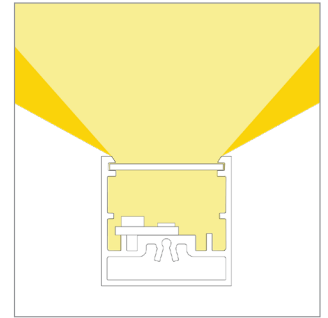
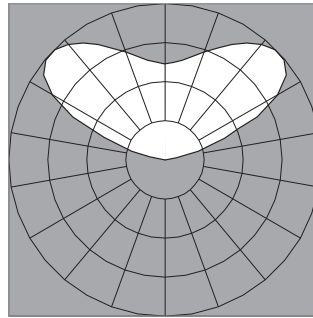
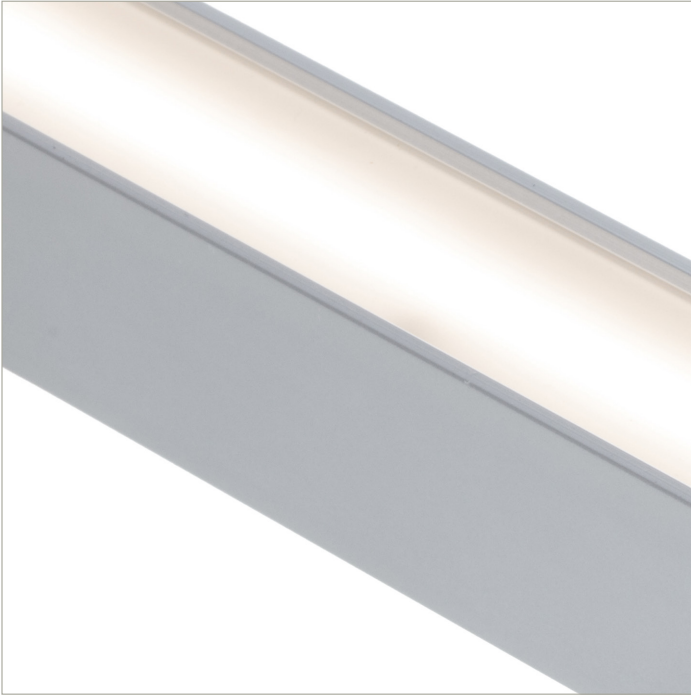
# BoxRail® | 107 | Wide Batwing | 90 CRI | LO

107-BX-XX-4-48-XX-XX-XX-XX-X-X-Z-LO-359-G1-X-XX-X

	2700K	3000K	3500K	4000K
Efficacy - Lumens per Watt	94	97	99	100
Total Lumens, 4' rail length (1219mm)	1293	1334	1361	1375
Lumens per foot (305mm)	323	333	340	344
Input Power (W), 4' rail length (1219mm)	13.8	13.8	13.8	13.8
Watts per foot (305mm)	3.5	3.5	3.5	3.5
CRI	94	94	94	94

Due to the large number of options in Vode's product offering, most Vode IES reports are factored reports prepared from source reports. Source reports are the IES test reports prepared for Vode by an NVLAP accredited photometric test laboratory. Factored reports are based on data from the Vode source reports.

If the data above is in black, it is directly from a Vode source report. If it is in grey, it is factored from Vode source reports. Reference details on Vode source reports can be found on the [IES File Finder](#) page on [vode.com](#).



## IES Report

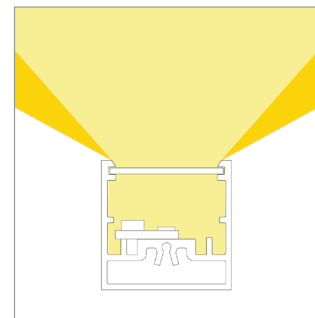
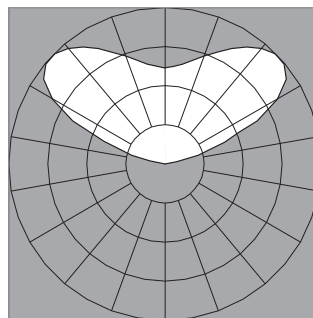
# BoxRail® | 107 | Wide Batwing | 90 CRI | SO

107-BX-XX-4-48-XX-XX-XX-XX-X-X-Z-SO-359-G1-X-XX-X

	2700K	3000K	3500K	4000K
Efficacy - Lumens per Watt	108	111	113	114
Total Lumens, 4' rail length (1219mm)	2561	2642	2696	2723
Lumens per foot (305mm)	640	661	674	681
Input Power (W), 4' rail length (1219mm)	23.9	23.9	23.9	23.9
Watts per foot (305mm)	6.0	6.0	6.0	6.0
CRI	94	94	94	94

Due to the large number of options in Vode's product offering, most Vode IES reports are factored reports prepared from source reports. Source reports are the IES test reports prepared for Vode by an NVLAP accredited photometric test laboratory. Factored reports are based on data from the Vode source reports.

If the data above is in black, it is directly from a Vode source report. If it is in grey, it is factored from Vode source reports. Reference details on Vode source reports can be found on the [IES File Finder](#) page on [vode.com](#).



## IES Report

# BoxRail® | 107 | Wide Batwing | 90 CRI | HO

107-BX-XX-4-48-XX-XX-XX-XX-X-X-Z-HO-359-G1-X-XX-X

	2700K	3000K	3500K	4000K
Efficacy - Lumens per Watt	100	104	106	107
Total Lumens, 4' rail length (1219mm)	4904	5059	5162	5214
Lumens per foot (305mm)	1226	1265	1291	1303
Input Power (W), 4' rail length (1219mm)	49.1	49.1	49.1	49.1
Watts per foot (305mm)	12.3	12.3	12.3	12.3
CRI	94	94	94	94

Due to the large number of options in Vode's product offering, most Vode IES reports are factored reports prepared from source reports. Source reports are the IES test reports prepared for Vode by an NVLAP accredited photometric test laboratory. Factored reports are based on data from the Vode source reports.

If the data above is in black, it is directly from a Vode source report. If it is in grey, it is factored from Vode source reports. Reference details on Vode source reports can be found on the [IES File Finder](#) page on [vode.com](#).