

## IES Report

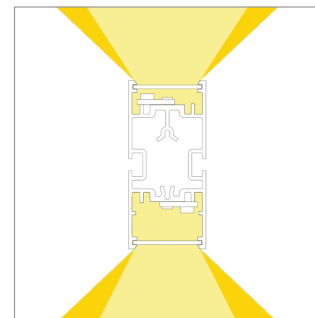
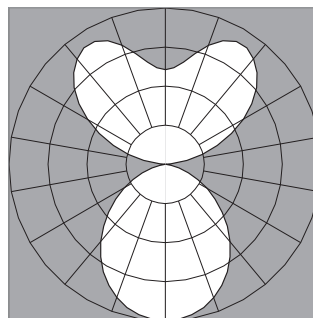
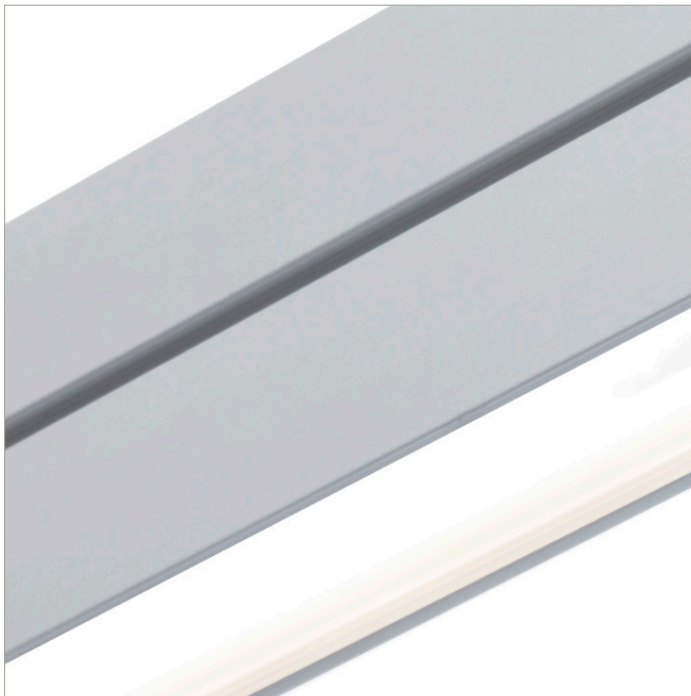
DoubleBox™ | 107 | 120° Batwing, up | Diffuse, down | 80 CRI | LO

107-DB-XX-4-48-XX-XX-XX-XX-X-X-Z-LO-35-G12-X-XX-X

	2700K	3000K	3500K	4000K
Efficacy - Lumens per Watt	98	101	103	105
Total Lumens, 4' rail length (1219mm)	2914	3006	3067	3129
Lumens per foot (305mm)	728	752	767	782
Lumens per foot UP (305mm)	377	389	397	405
Lumens per foot DOWN (305mm)	352	363	370	378
Input Power (W), 4' rail length (1219mm)	29.9	29.9	29.9	29.9
Watts per foot (305mm)	7.5	7.5	7.5	7.585
CRI	85	85	85	

Due to the large number of options in Vode's product offering, most Vode IES reports are factored reports prepared from source reports. Source reports are the IES test reports prepared for Vode by an NVLAP accredited photometric test laboratory. Factored reports are based on data from the Vode source reports.

If the data above is in black, it is directly from a Vode source report. If it is in grey, it is factored from Vode source reports. Reference details on Vode source reports can be found on the [IES File Finder](#) page on [vode.com](#).



## IES Report

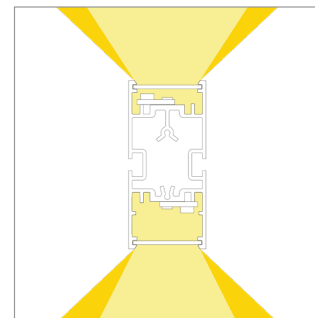
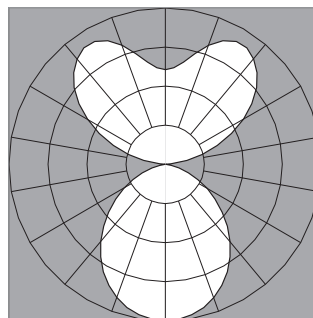
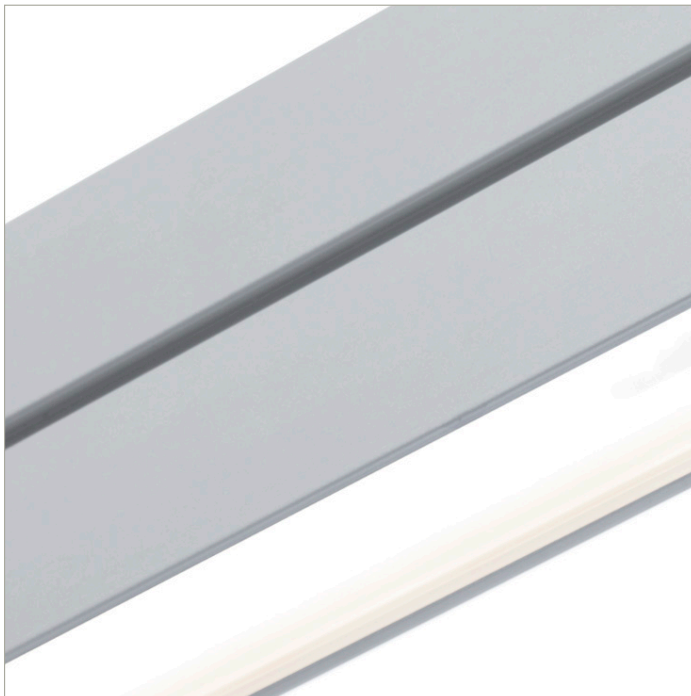
DoubleBox™ | 107 | 120° Batwing, up | Diffuse, down | 80 CRI | SO

107-DB-XX-4-48-XX-XX-XX-XX-X-X-Z-SO-35-G12-X-XX-X

	2700K	3000K	3500K	4000K
Efficacy - Lumens per Watt	122	125	128	131
Total Lumens, 4' rail length (1219mm)	5828	6012	6135	6257
Lumens per foot (305mm)	1457	1503	1534	1564
Lumens per foot UP (305mm)	754	778	794	810
Lumens per foot DOWN (305mm)	703	725	740	755
Input Power (W), 4' rail length (1219mm)	48.1	48.1	48.1	48.1
Watts per foot (305mm)	12.1	12.1	12.1	12.1
CRI	85	85	85	85

Due to the large number of options in Vode's product offering, most Vode IES reports are factored reports prepared from source reports. Source reports are the IES test reports prepared for Vode by an NVLAP accredited photometric test laboratory. Factored reports are based on data from the Vode source reports.

If the data above is in black, it is directly from a Vode source report. If it is in grey, it is factored from Vode source reports. Reference details on Vode source reports can be found on the [IES File Finder](#) page on [vode.com](#).



## IES Report

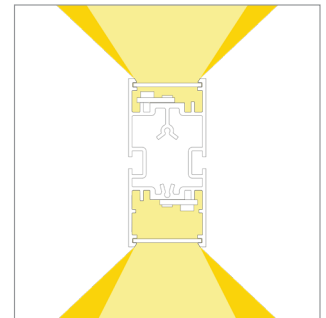
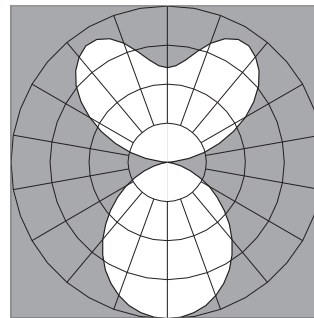
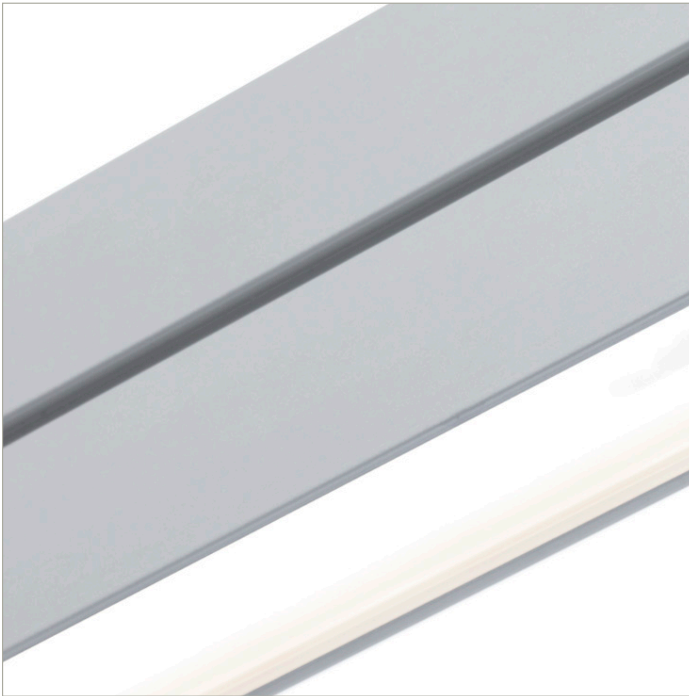
DoubleBox™ | 107 | 120° Batwing, up | Diffuse, down | 80 CRI | HO

107-DB-XX-4-48-XX-XX-XX-XX-X-X-Z-HO-35-G12-X-XX-X

	2700K	3000K	3500K	4000K
Efficacy - Lumens per Watt	113	117	119	121
Total Lumens, 4' rail length (1219mm)	11073	11423	11656	11889
Lumens per foot (305mm)	2768	2856	2914	2972
Lumens per foot UP (305mm)	1432	1478	1508	1538
Lumens per foot DOWN (305mm)	1336	1378	1406	1435
Input Power (W), 4' rail length (1219mm)	98.4	98.4	98.4	98.4
Watts per foot (305mm)	24.7	24.7	24.7	24.7
CRI	85	85	85	85

Due to the large number of options in Vode's product offering, most Vode IES reports are factored reports prepared from source reports. Source reports are the IES test reports prepared for Vode by an NVLAP accredited photometric test laboratory. Factored reports are based on data from the Vode source reports.

If the data above is in black, it is directly from a Vode source report. If it is in grey, it is factored from Vode source reports. Reference details on Vode source reports can be found on the [IES File Finder](#) page on [vode.com](#).



**IES Report**

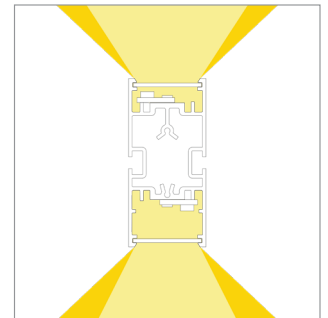
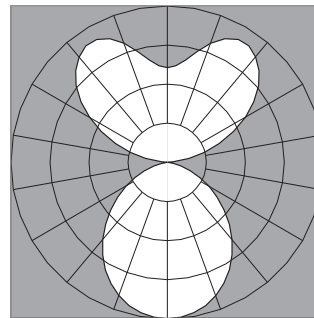
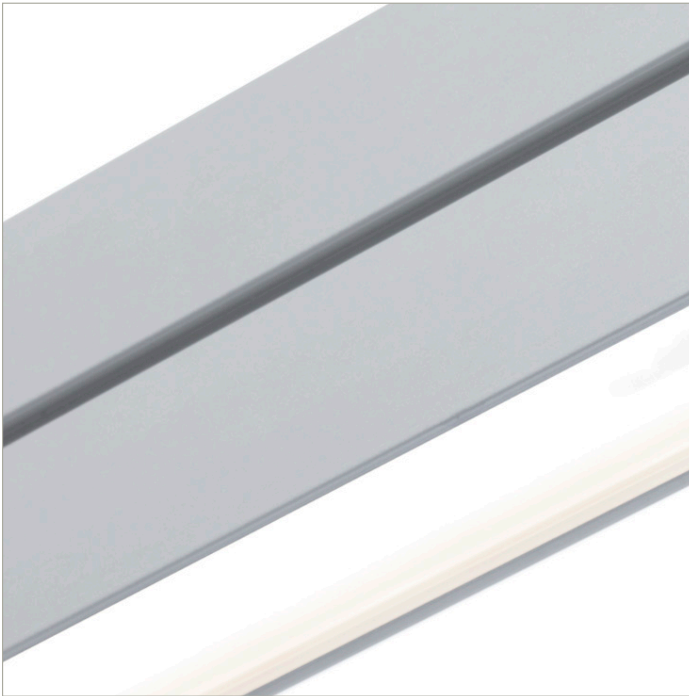
**DoubleBox™ | 107 | 120° Batwing, up | Diffuse, down | 90 CRI | LO**

107-DB-XX-4-48-XX-XX-XX-XX-X-X-Z-LO-359-G12-X-XX-X

	2700K	3000K	3500K	4000K
Efficacy - Lumens per Watt	85	87	89	91
Total Lumens, 4' rail length (1219mm)	2512	2591	2644	2697
Lumens per foot (305mm)	628	648	661	674
Lumens per foot UP (305mm)	325	335	342	349
Lumens per foot DOWN (305mm)	303	313	319	326
Input Power (W), 4' rail length (1219mm)	29.9	29.9	29.9	29.9
Watts per foot (305mm)	7.5	7.5	7.5	7.5
CRI	96	96	96	96

Due to the large number of options in Vode's product offering, most Vode IES reports are factored reports prepared from source reports. Source reports are the IES test reports prepared for Vode by an NVLAP accredited photometric test laboratory. Factored reports are based on data from the Vode source reports.

If the data above is in black, it is directly from a Vode source report. If it is in grey, it is factored from Vode source reports. Reference details on Vode source reports can be found on the [IES File Finder](#) page on [vode.com](#).



## IES Report

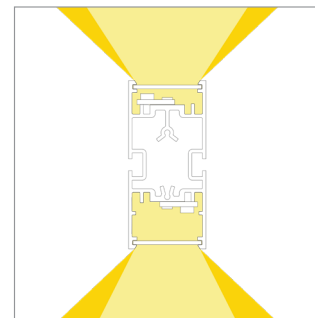
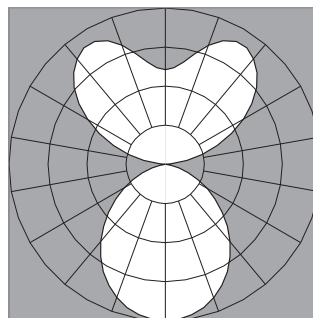
**DoubleBox™ | 107 | 120° Batwing, up | Diffuse, down | 90 CRI | SO**

**107-DB-XX-4-48-XX-XX-XX-XX-X-X-Z-SO-359-G12-X-XX-X**

	2700K	3000K	3500K	4000K
Efficacy - Lumens per Watt	105	108	110	113
Total Lumens, 4' rail length (1219mm)	5024	5183	5289	5394
Lumens per foot (305mm)	1256	1296	1322	1349
Lumens per foot UP (305mm)	650	671	684	698
Lumens per foot DOWN (305mm)	606	625	638	651
Input Power (W), 4' rail length (1219mm)	48.13	48.13	48.13	48.13
Watts per foot (305mm)	12.1	12.1	12.1	12.1
CRI	96	96	96	96

Due to the large number of options in Vode's product offering, most Vode IES reports are factored reports prepared from source reports. Source reports are the IES test reports prepared for Vode by an NVLAP accredited photometric test laboratory. Factored reports are based on data from the Vode source reports.

If the data above is in black, it is directly from a Vode source report. If it is in grey, it is factored from Vode source reports. Reference details on Vode source reports can be found on the [IES File Finder](#) page on [vode.com](#).



## IES Report

DoubleBox™ | 107 | 120° Batwing, up | Diffuse, down | 90 CRI | HO

107-DB-XX-4-48-XX-XX-XX-XX-X-X-Z-HO-359-G12-X-XX-X

	2700K	3000K	3500K	4000K
Efficacy - Lumens per Watt	97	101	103	105
Total Lumens, 4' rail length (1219mm)	9546	9847	10048	10249
Lumens per foot (305mm)	2386	2462	2512	2562
Lumens per foot UP (305mm)	1235	1274	1300	1326
Lumens per foot DOWN (305mm)	1152	1188	1212	1237
Input Power (W), 4' rail length (1219mm)	98.44	98.44	98.44	98.44
Watts per foot (305mm)	24.7	24.7	24.7	24.7
CRI	96	96	96	96

Due to the large number of options in Vode's product offering, most Vode IES reports are factored reports prepared from source reports. Source reports are the IES test reports prepared for Vode by an NVLAP accredited photometric test laboratory. Factored reports are based on data from the Vode source reports.

If the data above is in black, it is directly from a Vode source report. If it is in grey, it is factored from Vode source reports. Reference details on Vode source reports can be found on the [IES File Finder](#) page on [vode.com](#).